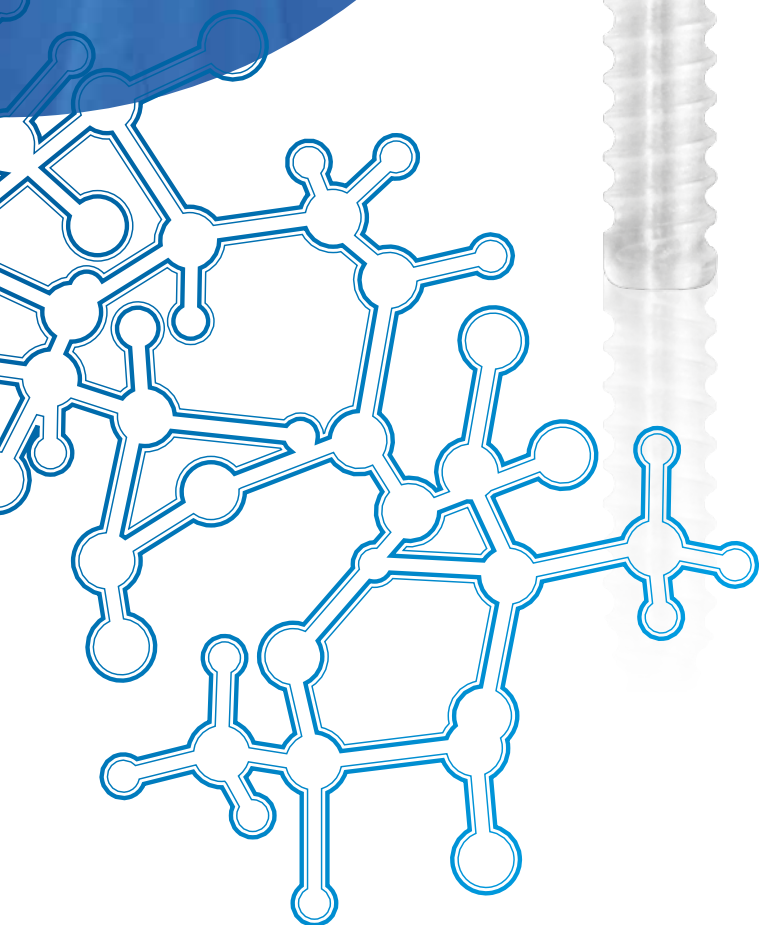




Choose

# ActivaScrew™ Interference

for its unique  
material properties.



## Get better with ActivaScrew™ Interference

High Usability for  
Various Indications

Implants that Do More

**bioretec**

# Get better with ActivaScrew™ Interference

High Usability for Various Indications

## 1. Hand

- Thumb Caprometacarpal (CMC) Ligament Reconstruction

## 2. Elbow

- Medial Collateral Ligament (MCL) Reconstruction
- Lateral Collateral Ligament (LCL) Reconstruction

## 3. Shoulder

- Biceps Tenodesis

## 4. Knee

- Anterior Cruciate Ligament (ACL) Reconstruction
- Posterior Cruciate Ligament (PCL) Reconstruction
- Medial Patellofemoral Ligament (MPFL) Reconstruction

## 5. Foot and ankle

- Lateral Ankle Reconstruction
- Flexor Digitorum Longus (FDL) Tendon Transfer
- Flexor Hallucis Longus (FHL) Tendon Transfer
- Achilles Tendon



The ActivaScrew™ Interference bioabsorbable screws are constructed of bioabsorbable poly(L-lactide-co-glycolide) (PLGA).

**ActivaScrew™ Interference**  
Patents: FI 124190. EP, US, FI Patent Pending

# ActivaScrew™ Interference offers

- **HIGH USABILITY FOR VARIOUS INDICATIONS**

ActivaScrew™ Interference is indicated for fixation of tissue, including ligament or tendon to bone, or a bone-tendon to bone in the presence of appropriate immobilization/controlled mobilization. Interference fixation is appropriate for surgeries including but not limited to knee, shoulder, elbow, ankle, foot and hand/wrist.

- **WIDE SELECTION OF DIFFERENT SIZES**

Diameters of 4 - 11 mm and lengths from 10 - 33 mm.

- **EASY INSERTION ALONG THE GUIDE WIRE (K-WIRE)**

The ActivaScrew™ Interference is cannulated. It allows insertion of the screw over a guide wire (1.6 or 0.8 mm) facilitating screw placement.

- **EASY POSITION IMAGING DURING THE OPERATION**

- **CENTER DRIVEN TORX DRIVER FOR OPTIMAL INSERTION**

- **HIGH STRENGTH PROPERTIES OFFER EASY INSERTION AND SAFE MEDICAL USE**

High initial mechanical properties and isoelasticity of ActivaScrew™ Interference are created during the manufacturing of the product. These features increase the reliability of the screw in clinical use.

- **SELF-LOCKING SL™**

After operation, dimensions of ActivaScrew™ Interference slightly change improving screw's fit inside the tunnel and thus reducing the risk of an unstable fixation. The Self-Locking SL™ property is activated under hydrolytic conditions.

- **ISOELASTICITY**

The bending modulus of the ActivaScrew™ Interference is closer to the value of cortical bone compared to metallic implants.

- **MR SAFE**

Metallic implants are known to disturb MR imaging. Bioabsorbable materials are not magnetic and do not disturb MR imaging.

- **ENABLES DRILLING THROUGH THE PRODUCT IN NEED OF RE-OPERATION**

- **NO NEED FOR REMOVAL OPERATION**

- **IMPLANT IS SUPPLIED GAMMA STERILIZED**

It is safe, free of gas remnants and the risk of cross infection is reduced.



# Example indications for ActivaScrew™ Interference

## Anterior Cruciate Ligament (ACL) Reconstruction

Bioretec offers a wide selection of different screw sizes and easy to use instrumentation for knee ligament reconstruction. Self-Locking SL™ property and graft friendly design of ActivaScrew™ Interference increase the reliability of the screw in clinical use.

In anterior cruciate ligament (ACL) reconstruction, a cannulated Notcher (B-II-8010) can be used to prepare the insertion point for the screw into the femoral and tibial tunnels. Using a cannulated torx driver for a 7/8/9/10/11 mm interference screw (B-II-9031) the ActivaScrew™ Interference is picked up from the holder and inserted along the guide wire (e.g. B-II-1624B) into the tunnel.

Typically, 7 - 11 mm screws are used for ACL reconstruction.



## Medial Patellofemoral Ligament (MPFL) Reconstruction

In addition to 7 - 11 mm interference screws, the Bioretec product range includes 4 - 6 mm interference screws for knee, shoulder, elbow, ankle, foot, hand and wrist surgery. Screws are cannulated and easy to use with a center driven Torx driver. Isoelasticity, Self-Locking SL™ and high strength properties enable easy insertion, safe medical use and good treatment results.

In case of medial patellofemoral ligament (MPFL) reconstruction a 4 - 5 mm ActivaScrew™ Interference can be used to fix a tendon graft onto the patella and 5 - 6 mm screws to fix a tendon graft onto the femur. 4 - 6 mm interference screws are inserted using a Torx shaft for 4/5/6 mm interference screw (B-II-9032). The Torx shaft is easy to attach to the large handle (B-ISC-9013) with quick coupling.



## Lateral Ankle Reconstruction

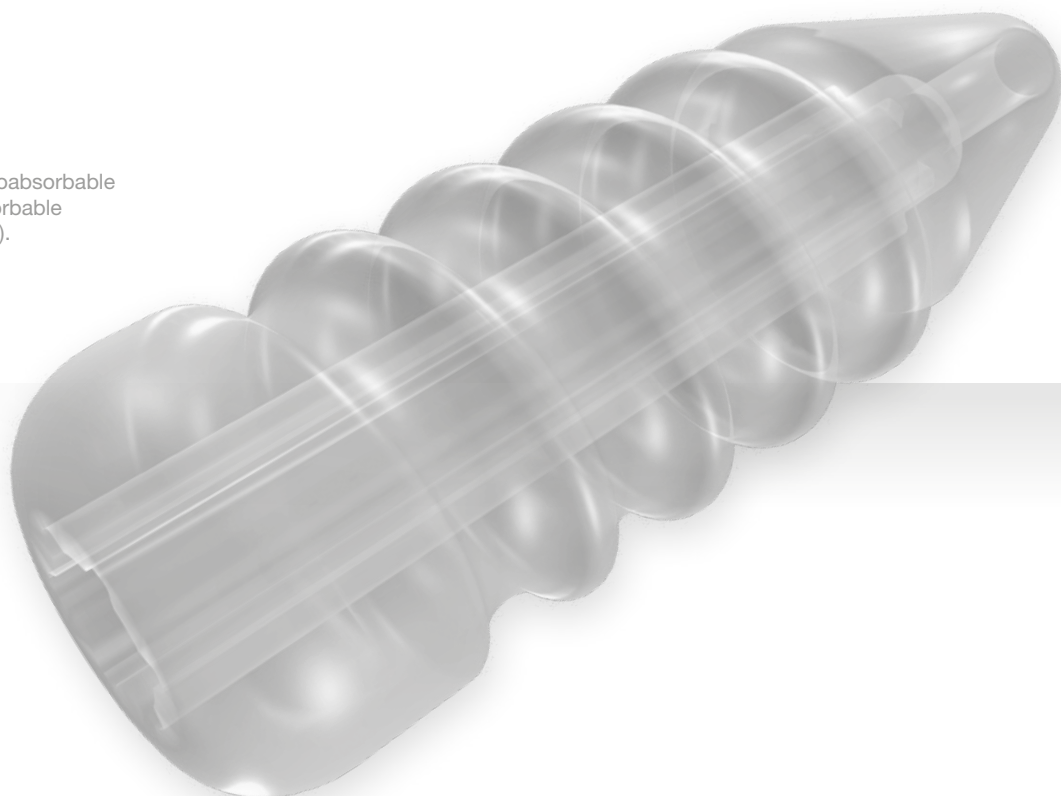
For lateral ankle reconstruction, 6 mm ActivaScrew™ Interference can be used to fix a tendon graft to achieve an anatomic reconstruction of the anterior talofibular and calcaneofibular ligaments in the ankle. A wide selection of different screw diameters and lengths enable you to choose the most suitable screw for the situation.

The ActivaScrew™ Interference delivery concept supports an aseptic way of working during the surgery. The ActivaScrew™ Interference is easy to pick up from the holder using a center driven Torx driver (B-II-9031, B-II-9032). The Torx driver extends through the length of the screw transmitting force throughout the screw making insertion of the screw easy and secure.



The ActivaScrew™ Interference bioabsorbable screws are constructed of bioabsorbable poly(L-lactide-co-glycolide) (PLGA).

**ActivaScrew™ Interference**  
Patents: FI 124190. EP, US,  
FI Patent Pending



# ActivaScrew™ Interference product range

## REMARK

**Prior to using Bioretec Implants examine thoroughly the Instructions For Use - inside each product package.**

## ORDERING INFORMATION

For more information please contact your nearest distributor or our customer service at [Sales@bioretec.com](mailto:Sales@bioretec.com). Valid product range available from our website: [www.bioretec.com](http://www.bioretec.com).

## Product range

| Product Code | Description                         | Product Code | Description                          |
|--------------|-------------------------------------|--------------|--------------------------------------|
| B-AI-0410    | ActivaScrew™ Interference 4 x 10 mm | B-AI-0820    | ActivaScrew™ Interference 8 x 20 mm  |
| B-AI-0415    | ActivaScrew™ Interference 4 x 15 mm | B-AI-0824    | ActivaScrew™ Interference 8 x 24 mm  |
| B-AI-0420    | ActivaScrew™ Interference 4 x 20 mm | B-AI-0828    | ActivaScrew™ Interference 8 x 28 mm  |
|              |                                     | B-AI-0830    | ActivaScrew™ Interference 8 x 30 mm  |
| B-AI-0510    | ActivaScrew™ Interference 5 x 10 mm | B-AI-0833    | ActivaScrew™ Interference 8 x 33 mm  |
| B-AI-0515    | ActivaScrew™ Interference 5 x 15 mm |              |                                      |
| B-AI-0520    | ActivaScrew™ Interference 5 x 20 mm | B-AI-0920    | ActivaScrew™ Interference 9 x 20 mm  |
|              |                                     | B-AI-0924    | ActivaScrew™ Interference 9 x 24 mm  |
| B-AI-0615    | ActivaScrew™ Interference 6 x 15 mm | B-AI-0928    | ActivaScrew™ Interference 9 x 28 mm  |
| B-AI-0620    | ActivaScrew™ Interference 6 x 20 mm | B-AI-0930    | ActivaScrew™ Interference 9 x 30 mm  |
| B-AI-0626    | ActivaScrew™ Interference 6 x 26 mm | B-AI-0933    | ActivaScrew™ Interference 9 x 33 mm  |
|              |                                     |              |                                      |
| B-AI-0720    | ActivaScrew™ Interference 7 x 20 mm | B-AI-1024    | ActivaScrew™ Interference 10 x 24 mm |
| B-AI-0724    | ActivaScrew™ Interference 7 x 24 mm | B-AI-1028    | ActivaScrew™ Interference 10 x 28 mm |
| B-AI-0726    | ActivaScrew™ Interference 7 x 26 mm | B-AI-1030    | ActivaScrew™ Interference 10 x 30 mm |
| B-AI-0730    | ActivaScrew™ Interference 7 x 30 mm | B-AI-1033    | ActivaScrew™ Interference 10 x 33 mm |
|              |                                     |              |                                      |
|              |                                     | B-AI-1128    | ActivaScrew™ Interference 11 x 28 mm |
|              |                                     | B-AI-1130    | ActivaScrew™ Interference 11 x 30 mm |
|              |                                     | B-AI-1133    | ActivaScrew™ Interference 11 x 33 mm |

## ActivaScrew™ Interference Instruments

| Product Code | Description  |
|--------------|--|
| B-II-9032    | Torx shaft for 4/5/6 mm interference screw with quick coupling                   |
| B-ISC-9013   | Large handle, cannulated, quick coupling   |
| B-II-9031    | Torx driver for 7/8/9/10/11 mm interference screw                                |
| B-II-8010    | Notcher for 7/8/9/10/11 mm interference screw                                    |
| B-II-0815    | K-wire Ø0.8 mm, length 150 mm, for 4/5/6 mm interference screw                   |
| B-II-0815B   | K-wire Ø0.8 mm, length 150 mm, blunt ends, for 4/5/6 mm interference screw       |
| B-II-0830B   | K-wire Ø0.8 mm, length 300 mm, for 4/5/6 mm interference screw, blunt ends       |
| B-II-1624    | K-wire Ø1.6 mm, length 240 mm, for 7/8/9/10/11 mm interference screw             |
| B-II-1624B   | K-wire Ø1.6 mm, length 240 mm, blunt ends, for 7/8/9/10/11 mm interference screw |
| B-II-1630B   | K-wire Ø1.6 mm, length 300 mm, for 7/8/9/10/11 mm interference screw, blunt ends |
| B-II-4000    | Drill bit Ø4.0 mm, cannulated, for 4 mm interference screws, quick coupling      |
| B-II-5000    | Drill bit Ø5.0 mm, cannulated, for 5 mm interference screws, quick coupling      |
| B-II-6000    | Drill bit Ø6.0 mm, cannulated, for 6 mm interference screws, quick coupling      |
| B-II-9000    | Sterilization tray, for ActivaScrew™ Interference instruments                    |
| B-IIS-1000   | ActivaScrew™ Interference Instrument Set   |

With Bioretec you do more than just a surgery.  
You set **NEW STANDARDS.**



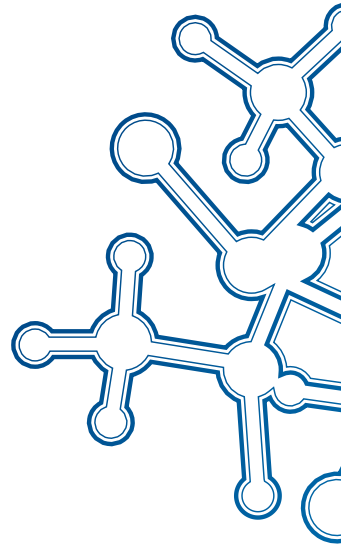


---

The Mission of Bioretec is to develop and bring into clinical use innovative bioabsorbable products and surgical solutions which improve patient outcome, user friendliness and cost-efficiency in clinical care.

**Implants that do more – It's Bioretec**

[www.bioretec.com](http://www.bioretec.com)



---

**bioretec**

**Manufacturer**  
**Bioretec Ltd.**  
Hermiankatu 22,  
FI-33720 Tampere, Finland  
Tel. +358 20 778 9500  
sales@bioretec.com  
www.bioretec.com

**Distributor**

Rev.3.0. Not valid in USA